

# Salt-in Crude Analyser

ASTM D3230; IP 265



## Standard Test for Salts in Crude Oil – Electrometric method



Agence Nord :  
Plug N'Work - Campus Effiscience  
2 Rue Jean Perrin - Bât D  
14460 Colombelles  
Tél: 02.31.34.50.74 Fax: 02.31.34.55.17

Agence Sud :  
Hôtel d'Entreprises de La Croix Rouge - Lot A4  
10 Av de la Croix Rouge - 84000 Avignon  
Tél : 04.90.27.17.95 Fax : 04.90.27.17.52

[www.deltalabo.fr](http://www.deltalabo.fr)

[www.stanhope-seta.co.uk](http://www.stanhope-seta.co.uk)

## Key Features

- Salt concentration values displayed automatically
- No need for mixing of salt standards
- Pre calibrated for immediate use for ASTM D3230
- User calibration modes allow verification using user standard:
- Typical test time of less than 30 seconds
- Moisture proof membrane touch screen with large keys
- Fully portable, all items contained in aluminium carry case
- Supplied with beaker and sensor support stands
- Interchangeable plug-in sensor
- Battery or mains power supply



## Background

The presence of salts (chlorides) in crude oil provides a serious problem to drilling, pumping and refining processes, it is also of concern during transport. Excessive salt levels may cause corrosion problems and clogging of pipelines, refining and catalytic processes.

Salt content of crude oil is variable and can be affected by production practices and from handling during distribution, accurate determination of the salt content of crude oil provides data that assists with desalting operations.

ASTM D3230, IP 265 and equivalent test methods require the calibration of a suitable electrometric salt meter using standards of known conductivity against which measurement of the sample can be taken.

## Principles of Operation

The **Seta Salt-in-Crude Analyser** (99700-5) is a robust and portable instrument for determining the chloride (salt) content of crude oils in full conformity to ASTM D3230, IP 265 and equivalent test methods.

The **Seta Salt-in-Crude Analyser** is pre-calibrated and automatically displays salt concentration measurements in g/m<sup>3</sup> or lbs/1000bbl (pounds per thousand barrels), this avoids the need to mix salt calibration standards and makes testing a simple and fast procedure.

The **Seta Salt-in-Crude Analyser** has 3 test modes:

- ASTM/PRECAL - pre-calibrated for use in conformity to ASTM D3230
- ASTM USER- allows user calibration of ASTM values (ie: display values can be verified and/or recalibrated by the user against salt solutions of known conductivity)
- IP USER - allows user calibration according to IP 265 values

Measurements can be displayed or exported to pc or to a LIMS network. The instrument is suitable for bench top or hand-held operation and operates from battery or mains voltage.



**Agence Nord :**  
Plug N'Work - Campus Effiscience  
2 Rue Jean Perrin - Bât D  
14460 Colombelles  
Tél: 02.31.34.50.74 Fax: 02.31.34.55.17

**Agence Sud :**  
Hôtel d'Entreprises de La Croix Rouge - Lot A4  
10 Av de la Croix Rouge - 84000 Avignon  
Tél : 04.90.27.17.95 Fax : 04.90.27.17.52

[www.deltalabo.fr](http://www.deltalabo.fr)

/ [www.stanhope-seta.co.uk](http://www.stanhope-seta.co.uk)

## Applications for the Salt-in-Crude Analyser

- Refineries
- Pipelines
- Terminals
- Laboratories
- Inspection Companies
- Oil platforms



## Safety & Maintenance

The **Salt-in-Crude Analyser** is housed in a robust ABS case with moisture proof membrane switch panel, service is limited to changing the battery. An interchangeable spare sensor is available.

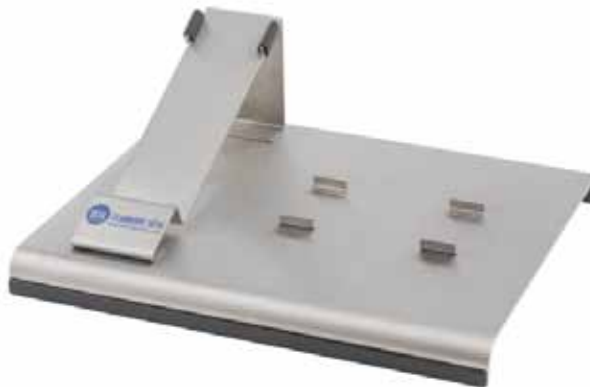
## Technical Specification

Product No.:	99700-5
Conductivity Range:	0.0 to 151 lbs/1000bbl (Res: 0.1 lbs/1000bbl) 0.0 to 430.0 g/m <sup>3</sup> (Res: 0.1 g/m <sup>3</sup> )
Temperature Range:	-20° to 150°C (res: 0.1°C)
Weight:	1.6kg
Power:	9 volt dc battery or mains adaptor (110/120/220/240V, 50/60Hz adaptor supplied)
Size (HxWxD):	20 x 7 x 3.5cm

SUPPLIED WITH: mains voltage transformer, beaker & sensor support stands, carry case, mains adaptor, software, RS232 cable & instruction manual

## Available Accessories

- 99700-402 Spare Sensor Assembly
- 99700-403 Power supply
- 99700-404 Stands (pair for beaker and sensor assembly)
- 99700-301 Beaker (pack 10)
- 99701-0 Instrument bench stand



**Agence Nord :**  
Plug N'Work - Campus Effiscience  
2 Rue Jean Perrin - Bât D  
14460 Colombelles  
Tél: 02.31.34.50.74 Fax: 02.31.34.55.17

**Agence Sud :**  
Hôtel d'Entreprises de La Croix Rouge - Lot A4  
10 Av de la Croix Rouge - 84000 Avignon  
Tél : 04.90.27.17.95 Fax : 04.90.27.17.52

[www.deltalabo.fr](http://www.deltalabo.fr)

[www.stanhope-seta.co.uk](http://www.stanhope-seta.co.uk)